

# Rittal – The System.

Faster – better – everywhere.

## Support strip for TS, SE, CM, TP – TS 4309.000

Date : Jan 22, 2019

ENCLOSURES

POWER DISTRIBUTION

CLIMATE CONTROL

IT INFRASTRUCTURE

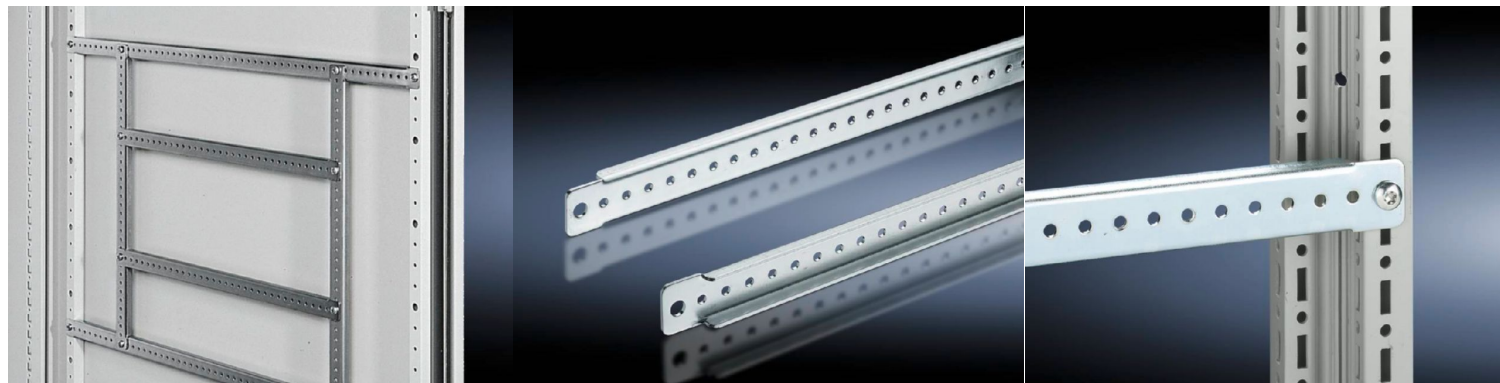
SOFTWARE & SERVICES

FRIEDHELM LOH GROUP



# Support strip for VX, TS, SE, CM, TP – TS 4309.000

created: 22.01.2019 build on [www.rittal.com/uk-en](http://www.rittal.com/uk-en)



## Product description

<b>Design:</b>	On the vertical and horizontal TS, SE enclosure section on the inner mounting level, height-offset all-round On the tubular door frame TS, SE On the perforated door strip CM, TP
----------------	---

<b>Description:</b>	For simple cable routing from the mounting plate to the door.
---------------------	---

<b>Material:</b>	Sheet steel
------------------	-------------

<b>Surface finish:</b>	Zinc-plated
------------------------	-------------

<b>Supply includes:</b>	Assembly parts
-------------------------	----------------

## Product features

<b>To fit:</b>	Enclosure type: TS Enclosure type: SE Enclosure type: CM Enclosure type: TP Width/depth: 400 mm
----------------	---

<b>Dimensions:</b>	Length: 390 mm
--------------------	----------------

<b>Installation options:</b>	On the inner and outer mounting level, on the enclosure section
------------------------------	---

<b>To fit door width:</b>	500 mm
---------------------------	--------

<b>Packs of:</b>	20 pc(s).
------------------	-----------

<b>Weight/pack:</b>	3.98 kg
<b>EAN:</b>	4028177098510
<b>Customs tariff number:</b>	73269098
<b>ETIM 6.0:</b>	EC002620
<b>ETIM 5.0:</b>	EC002620
<b>eCl@ss 8.0/8.1:</b>	27189261
<b>eCl@ss 7.0/7.1:</b>	27189261
<b>eCl@ss 6.0/6.1:</b>	27189261
<b>eCl@ss 5.1/5.1.4:</b>	27189233
<b>Product description:</b>	TS Support strip, for TS, SE, CM, TP, for the inner mounting level: for W/D: 400 mm, for door width: 500 mm, L: 390 mm
<b>Approvals</b>	
<b>Certificates:</b>	EAC